

# Ambu® IV Trainer

The Ambu® IV Trainer is for training on the insertion of cannulas and catheters, the infusion of fluids and the injection of medication, blood sampling and pulse measurement.



- Replaceable skin and veins
- Movable wrist and rotating arm
- Indicator panel
- Multi purpose carrying case
- Fits all Ambu Man Manikins
- Valve system

**Ambu**

# Ambu® IV Trainer

## Replaceable Skin And Veins

Replaceable skin and veins are made of natural latex, which features hole closure after penetration, extending the lifetime of the arm.

## Movable Wrist

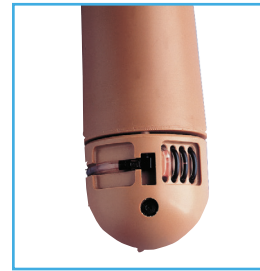
The movable wrist and rotating arm ensure realistic training conditions, especially when a catheter is placed on the back of the hand.

## Indicator Panel

The indicator panel which represents each blood vessel, gives immediate feedback, e.g. if an infusion has been correctly accomplished.

## Valve System

The valve system reduces the formation of air pockets in blood vessels.



Ambu IV Trainer



Accessories for Ambu IV Trainer



Packed in a robust bag

## SPECIFICATIONS

Product	Dimension
Weight	3 kg
Length	68 cm
Reservoir capacity	260 ml
Carry case dimensions	75 x 15 x 11 cm

## MATERIALS

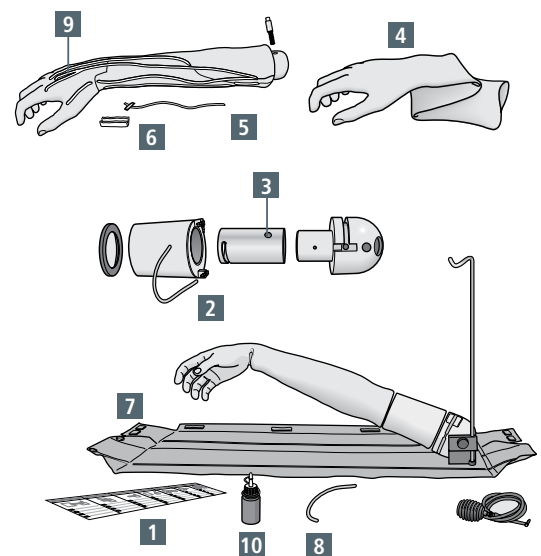
Product	Material
Skin	Natural latex
Arm and hand	PVC, hard
Veins and artery	Natural latex
Indicator	Nylon

## ORDERING SPECIFICATIONS

Product Code	Description
A255001000	Ambu IV Trainer, complete with infusion stand, red dye concentrate, 5 ml and 50 ml syringes. Supplied in a carry case/washable underlay.
<b>Accessories</b>	
255 000 704	Red Dye concentrate

## DIAGRAM REFERENCE

Cat. No.	Spare Parts*
490 006 600	1. Instruction label, vinyl for carry case
255 000 513	2. Filling tube, 12 cm
255 000 506	3. Plastic rivets, set of 3
255 000 517	4. Latex skin/glove
255 000 503	5. Pulse balloon with protective cover
255 000 519	6. Foam nylon pad for pulse
255 000 521	7. Carrying case/training mat
255 000 504	8. Overflow tube, 25 cm
255 000 501	9. Set of vein and artery tubes
255 000 704	10. Red Dye concentrate



\*Some of these items are non-stock so there maybe a delay in supply, which we will advise at the time of order.



Ambu Australia Pty Ltd | Ambu New Zealand Pty Ltd  
 Unit 5, 2 Daydream Street, Warriewood, NSW 2102  
 Tel (AUS): 1300 233 118 | Tel (NZ): 0800 804 079  
 Email: aussales@ambu.com Web: www.ambuaustralia.com.au

AA23 0137 V01  
 Always read the Instructions for Use.  
 ©2023 Ambu Australia Pty Ltd